

# Adult Achievement Awards

**A. Volunteer of Excellence Award Pin +.** Recognizes volunteers who have contributed outstanding service while partnering directly with girls in any pathway to implement the GSLE through the use of the National Program Portfolio or in support of the Council's mission delivery to girl and adult members.  $\frac{3}{4}$ " round. Silvertone plated brass. Clutch back. Imported. Requires Council approval. **09059. \$9.00.**

**B. Adult Appreciation Pin +.** Recognizes an individual's exemplary service in support of delivering the GS Leadership Experience with impact on one geographic area of service.  $\frac{1}{2}$ " square. Steel with gold plate. Safety catch closure. Imported. Requires Council approval. **09057. \$10.50.**

**C. Adult Honor Pin +.** Recognizes an individual's exemplary service in support of delivering the GSLE which has had measurable impact on two or more geographic areas of service, allowing the council to reach and surpass its mission delivery goals.  $\frac{5}{8}$ " round. Steel with gold plate. Safety catch closure. Imported. Requires Council approval. **09058. \$10.50.**

**D. USGS Overseas Pin.** This pin is available to any girl or adult who is, or has been registered in a USA Girl Scouts Overseas committee.  $\frac{3}{4}$ " round. Goldtone steel with epoxy. Clutch back. Imported. **09060. \$5.00.**



Contact your local Girl Scout Council for earning requirements.

**E. Lifetime Membership Pin +.**  $\frac{3}{4}$ " round. Brass with gold plate. 3 pt. cubic zirconia stone. Clutch back. Made in the USA. Requires council approval. **Profiles. 09015. Traditional. 09010. \$28.00.**

**F. Volunteer Service Award Pin.** 5 through 30 years by 5's.  $\frac{3}{4}$ ". Brass plated steel with epoxy. Clutch back. Imported. **09973 through 09978. \$6.00.**

**G. Reproduction Mariner's Pin +.**  $\frac{1}{4}$ " round. Replica of original issued from 1934-1960. Safety catch closure. Imported. **09852. \$9.50.**

**H. Thanks Badge II +.**  $\frac{5}{8}$ " round, gold-filled. Clutch back. Made in USA. **09924. \$38.00.**

**J. Miniature Thanks Badge +.** 10K gold filled. Made in USA.  $\frac{3}{8}$ ". Safety catch. **09921. \$15.00.**  $\frac{3}{8}$ ". Clutch back. Made in USA. **09923. \$18.00.**

**K. Thanks Badge +.** Gold-filled and enamel medallion on grosgrain ribbon. Safety catch closure. Made in USA. **09920. \$150.00. Not Shown:** Gold plated copper. Imported. **09922. \$50.00.**

**L. Reproduction Curved Bar Pin +.**  $\frac{3}{4}$ " x  $\frac{3}{4}$ ". Replica of original issued from 1947-1963. Safety catch closure. Imported. **09850. \$6.50.**

**M. Reproduction 1st Class Pin +.**  $\frac{1}{2}$ " round. Replica of original issued from 1941-1982. Safety catch closure. Made in USA. **09840. \$6.50.**

**N. Outgoing President's Pin +.** 1" long, gold plated. Safety catch closure. Made in USA. **09935. \$18.00.**

+ Earned Award

**A-L. Adult Position Pins.** Adult Position Pins indicate the present position of a volunteer in the Girl Scout organization. Goldtone finish with epoxy fill. Steel bar closure.  $\frac{7}{8}$ " L x  $\frac{1}{4}$ " W. Imported. **\$5.00.**

**A. Lime Green.** Learning facilitators. **14500.**

**B. Red.** Program volunteers, event and camp pathway volunteers. **14080.**

**C. Maroon.** National Operational Volunteers (NOVs) and National Board Committee Members. **14081.**

**D. Orange.** Series and Travel Pathway Volunteers. **14082.**

**E. Yellow.** Troop Pathway Volunteers and VITs. **14083.**

**F. Dark Green.** National Board of Directors. **14084.**

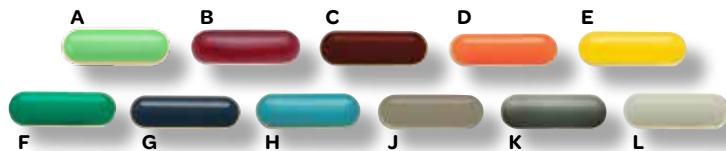
**G. Deep Blue.** National Board of Officers. **14085.**

**H. Light Blue.** Service Team Volunteers, Administrative Volunteers, USAGSO Committee Chairs, Overseas Committee Members, and Council Volunteers. **14086.**

**J. Beige.** Staff. **14087.**

**K. Dark Grey.** Council Presidents. **14088.**

**L. Light Grey.** Council Board Members. Board Committee Members. **14089.**



**Daisy**  
**09051**



**Brownie**  
**09052**



**Junior**  
**09053**



**Cadette**  
**09054**



**Senior**  
**09055**



**Ambassador**  
**09056**

**M. Volunteer Pins.** Volunteer pins may be purchased by any Girl Scout Volunteer. Goldtone pin with age level shorthand in center and corresponding color border with "Girl Scout Volunteer."  $\frac{3}{4}$ " round. Butterfly clasp. Brass plated steel with epoxy. Imported. Volunteer pins are worn on the right side of the Adult Uniform below I.D. pin. **\$5.00.**

**N. Official Adult Insignia Tab.** Polyester/cotton grosgrain ribbon. Green. Imported. **14062. \$3.00.**

**P. Miniature Gold Award Parent Pin.** Miniature Gold Award Parent pin may be worn by significant adult(s) associated with Gold Award recipient. Not to be substituted for official insignia. Gold plate. Clutch back. Imported. **09925. \$20.50.**

**Q. World Trefoil Pin.** Clutch back. **09062. \$2.50. Not Shown:** Gold-plated. Imported. **09063. \$5.50.**

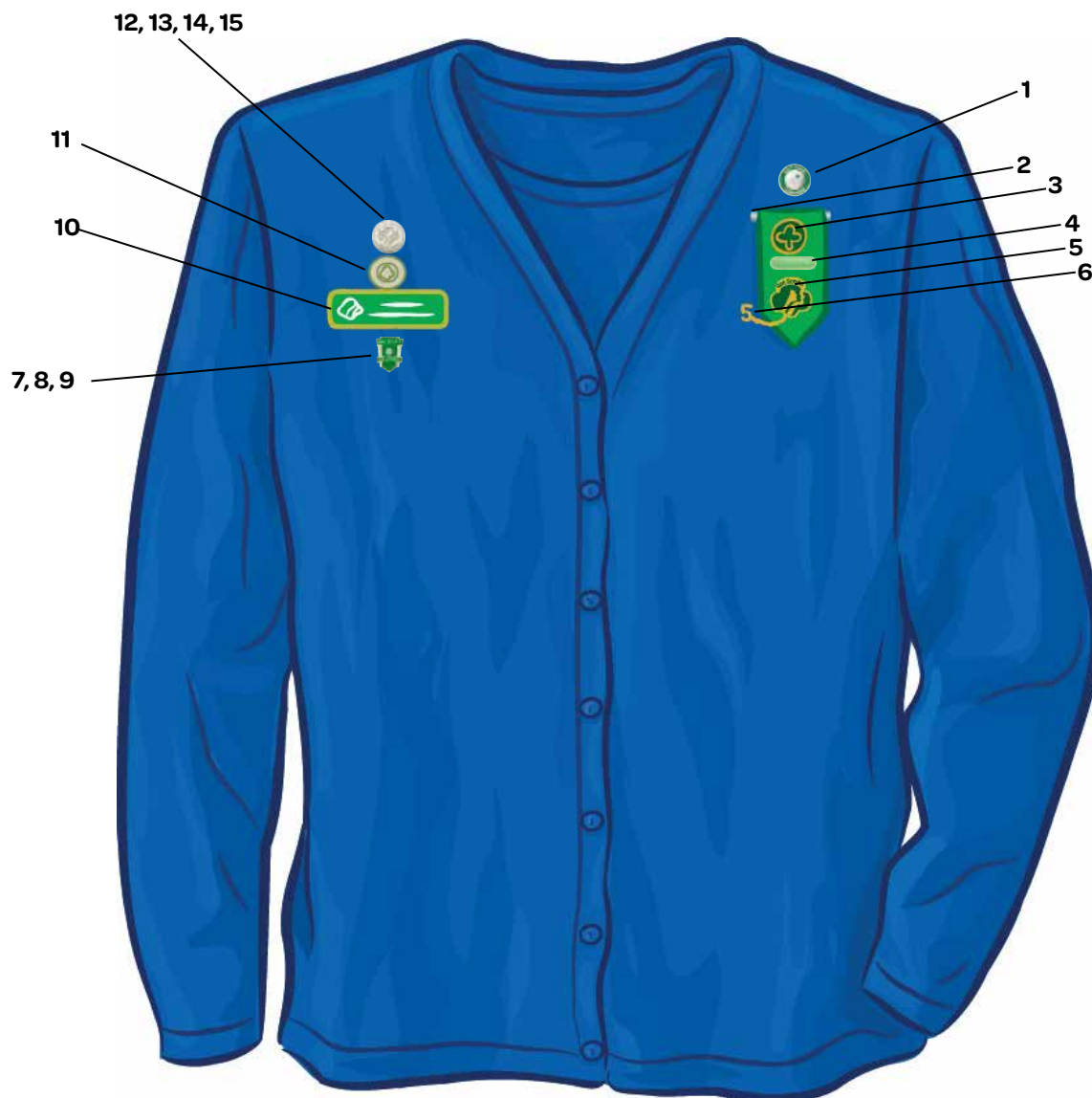
**R. Membership Numeral Guards.** Optional. Arabic 5 to 85 by 5's. Imported. **09609 through 09685. \$3.50.**

**S. Official Girl Scout Membership Pin.** Goldtone steel with epoxy. Safety catch. Imported. **09014. \$2.50.**

**T. Official Volunteer Pin.** Silvertone with plated steel epoxy fill. Butterfly clutch back. Imported. **09065. \$5.00.**



# Adult Girl Scout Insignia Placement



- |  |  |
|--|--|
| <b>1. Volunteer Pin</b>                                | <b>9. Alumna Pin</b>                         |
| <b>2. Adult Insignia Tab</b>                           | <b>10. Personalized ID Pin</b>               |
| <b>3. World Trefoil Pin</b>                            | <b>11. Lifetime Membership Pin</b>           |
| <b>4. Adult Position Pin</b>                           | <b>12. Volunteer of Excellence Award Pin</b> |
| <b>5. Girl Scout Pin (contemporary or traditional)</b> | <b>13. Thanks Badge</b>                      |
| <b>6. Membership Numeral Guard</b>                     | <b>14. Thanks Badge II</b>                   |
| <b>7. Bridge to Adult Girl Scouts Award</b>            | <b>15. Honor Pin</b>                         |
| <b>8. Volunteer Service Award Pin</b>                  |  |

Earned award pins are worn above the ID pin, high up near the shoulder on the right side of the Adult uniform. Other volunteer recognition pins such as the Volunteer age level pins can be worn below the ID pin on the right side. Note: if an adult has received more than one special recognition (e.g. Appreciation pin), the last one received is generally the one worn on the uniform.